

# WELCOME TO 365 CHURCH STREET SUITE 2610

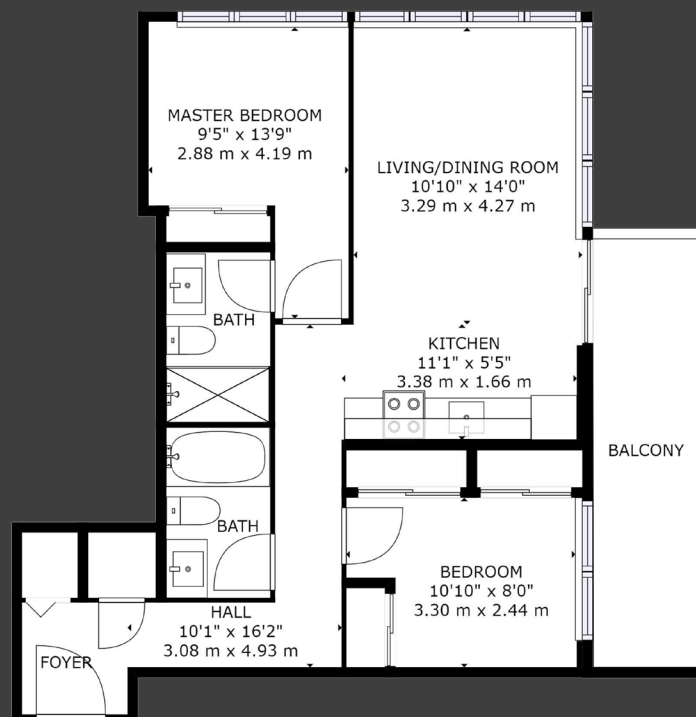


## SPACIOUS & ULTRA-MODERN

This spacious and ultra-modern two bedroom, two bathroom suite at 365 Church is the definition of true urban living come to life. Featuring a split bedroom layout and spacious balcony with amazing city views, this corner unit boasts an impressive kitchen with quartz countertop, sleek black tile backsplash, and integrated stainless steel appliances. The bright open concept living and dining area with two spacious walls of windows await your designer touch.

Never fight for closet space again with three large closets in the second bedroom, plus a principal bedroom with its own double closet and spa-like ensuite bath. This amazing unit also has contemporary dark-stained laminate floors throughout, front-loading washer and dryer, and a convenient full second bath.

365 Church Street boasts top-of-the-line amenities, including a business lounge skyline rooftop with party room, gym and yoga studio, and much more. In the heart of the city, it boasts a 96 walk score and is steps to College Subway Station, Eaton Centre, Dundas Square, Ryerson University and University of Toronto, Loblaws, and College Park.



# SUITE 2610 AT A GLANCE

**TAXES** \$2,956.54 (2020) **BEDROOMS** 2 **BATHROOMS** 1x4, 1x3 **APPROXIMATE SIZE** 700-799 square feet

**PARKING** Underground parking (1) **EXPOSURE** southeast **HEAT** forced air / gas

**MAINTENANCE FEES** \$691.74

(includes central air conditioning, building insurance, parking, and common elements)

**INCLUSIONS** fridge, stove, range hood, dishwasher, microwave, washer and dryer, all electrical light fixtures

## LIVING & DINING ROOM

20.34 x 10.76 feet

Laminate floor, open concept, walk-out to balcony



## LIVING & DINING ROOM

20.34 x 10.76 feet

Laminate floor, open concept, walk-out to balcony



## KITCHEN

20.34 x 10.76 feet

Combined with living room, quartz counter, stainless steel appliances



## PRINCIPAL BEDROOM

9.32 x 9.32 feet

Large closet, laminate floor, large window



## ENSUITE BATHROOM

Three piece bathroom



## SECOND BEDROOM

9.09 x 8.23 feet

Large closet, laminate floor



SWEET HOME



SMART MOVES



GROWTH

YOUR CHOICE FOR DOWNTOWN CONDOS & LOFTS  
**BAYSTREETCONDOS.CA**  
REFINED REAL ESTATE SERVICE

**Shaun Hsu & Scott Garnett**

Broker

416.786.5168

shsu@trebnet.com

Sales Representative

647.407.4168

sgarnett@trebnet.com



Sutton Group - Associates Realty Inc., Brokerage

358 Davenport Road Toronto Ontario M5R 1K6 Bus: 416.966.0300 Fax: 416.966.0080

Each Office Is Independently Owned And Operated.